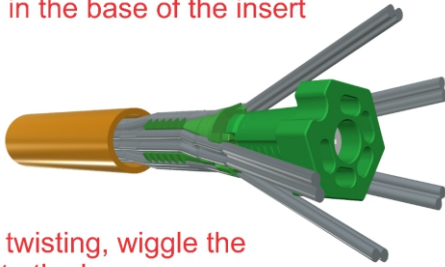


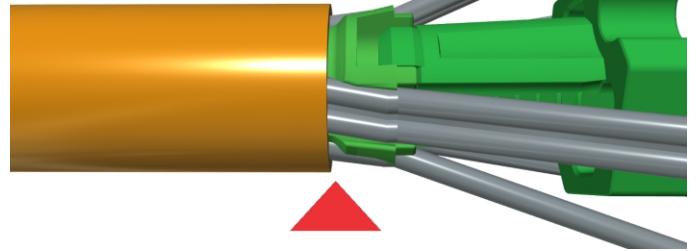
Assembly of Easy Maintenance POF coupling

Align the fibres in the hose with the grooves in the base of the insert

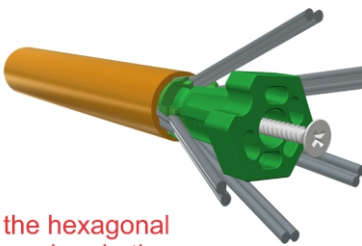


Without twisting, wiggle the insert into the hose

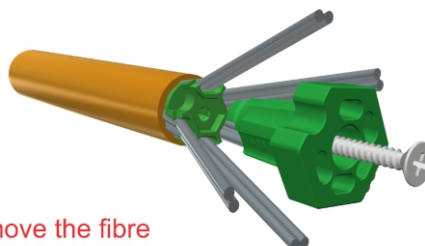
Push it only to the base of the collar



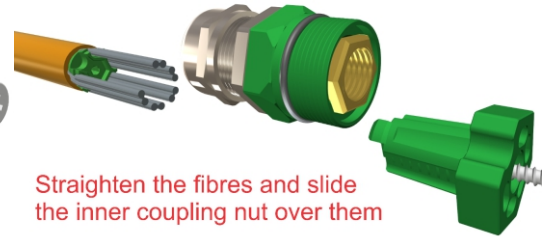
Hold the hexagonal collar and undo the screw to remove the fibre fix insert



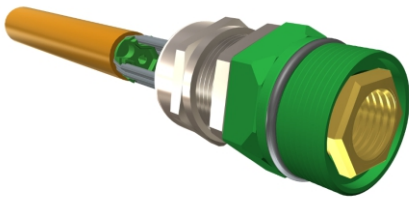
Remove the fibre fix insert from the locating recess in the hose insert



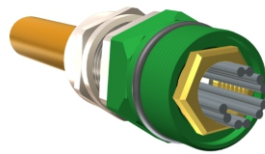
Straighten the fibres and slide the inner coupling nut over them



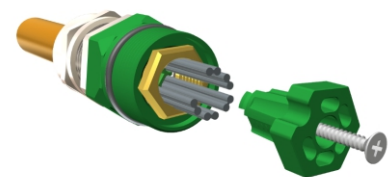
Straighten the fibres and slide the inner coupling nut over them



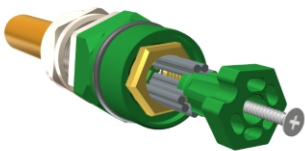
Ensure the internal washer is seated onto the recessed shoulder on the hose insert



Re-insert the fibre fix insert by aligning the fibres with the slots and thus the locating recess



Re-insert the fibre fix insert by aligning the fibres with the slots and thus the locating recess



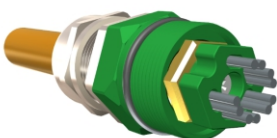
Try pushing it in as far as you can to seat it into the locking recess before using the screw to secure it



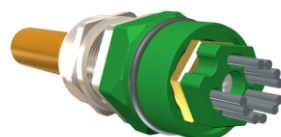
Do not twist the hex section or fully tighten the screw as yet



Rotate the complete inner nut assembly including the cable gland and the brass bush to align the the hex of the brass bush with the fibre fix insert



Once the two Hex are aligned, fully tighten the screw in the fibre fix insert to secure the fibres



Now tighten the cable gland to secure the entire assembly It is now ready for cutting and polishing of the fibres

